

DRIP MIRROR

TWO-TONE

Our signature two-tone color resin Drip Mirror is available in ANY and EVERY combination of colors imaginable!

We can color match to any sample color swatch or pantone number and look forward to creating something special and unique for you.

Our Two-tone Drip Mirrors add a bold pop of color to your wall! Each Drip Mirror is hand poured with layers of resin creating a border of our signature stalactite drips.

COLORWAY: THISTLE & APRICOT

DRIP MIRROR

TWO-TONE

STUDIO EXCLUSIVE

MATERIAL: RESIN and GLASS MIRROR

PATTERN: TWO-TONE

COLOR: ANY TWO COLORS

PIGMENTED, MOLDED, AND FINISHED BY HAND IN LA.
CUSTOMIZATION AVAILABLE.

ALL PIECES ARE MADE TO ORDER

50% DEPOSIT REQUIRED.

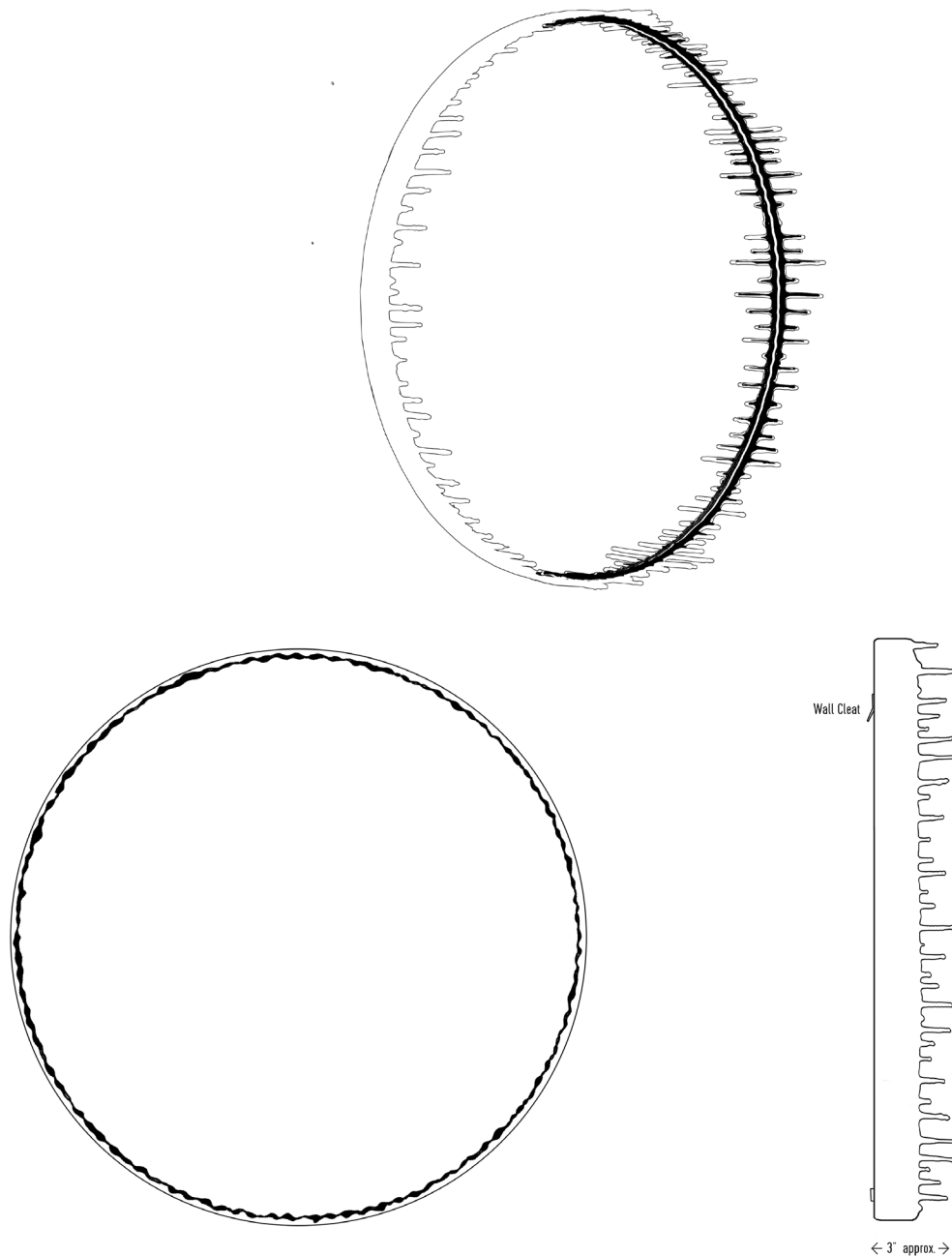
BALANCE DUE PRIOR TO SHIPPING.

LEAD TIME APPROXIMATELY 3-4 WEEKS.

Our mirrors are all handmade and will vary slightly in shape, size, color and pattern.

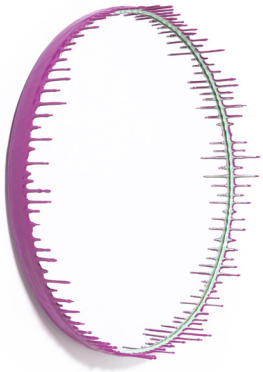
AVAILABLE STANDARD SIZES:

18" Diameter	\$955
26" Diameter	\$1,445
30" Diameter	\$1,855
36" Diameter	\$2,470

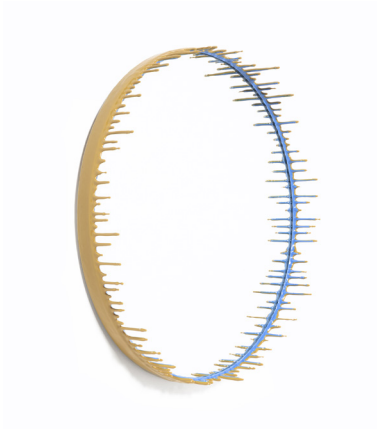


DRIP MIRROR

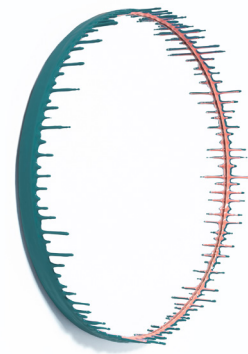
TWO-TONE



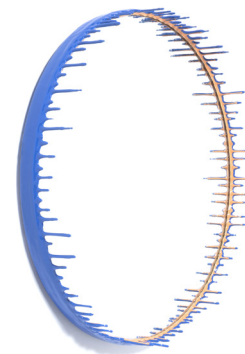
FUCHSIA / CELADON



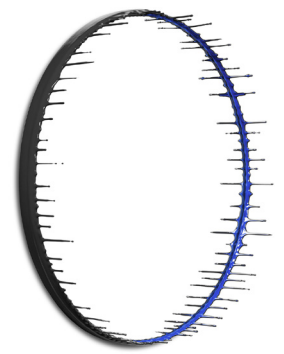
MUSTARD / THISTLE



TEAL / CORAL



THISTLE / APRICOT



BLACK / BLUE

